

# Parts Manual

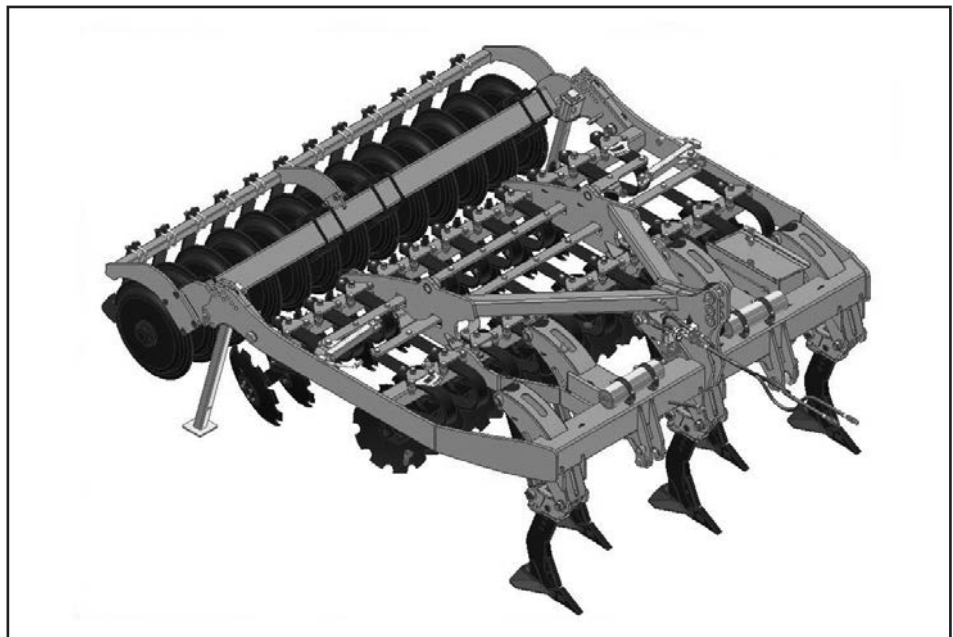
DTX300 / 350  
Auto Reset

 **Great Plains**

Manufacturing, Inc.  
[www.greatplainsmfg.com](http://www.greatplainsmfg.com)



Read the operators manual entirely. When you see this symbol, the subsequent instructions and warnings are serious - follow without exception. Your life and the lives of others depend on it!



*Illustrations may show optional equipment not supplied with standard unit.*

ORIGINAL INSTRUCTIONS

© Copyright 2017 Printed 31-08-17 Revision D

604-108P

EN

## Contents

### Frames

Chassis Assembly.....	6
Toolbox Assembly.....	8

### Lights

Front Light Assembly.....	10
Rear Light Assembly.....	12

### Discs

Disc Arm Assembly (Single Hub).....	14
Disc Blades.....	16
Disc Hub Configurations.....	18

### Tines

Tine Assembly.....	20
Tine Pocket Assembly.....	22

### Rollers

Scraper Rail Assembly.....	26
DD600 Pillar Assembly.....	28
DD600 Roll Assembly.....	30
Roll Pillar (DDL 600, HD, V, ML & Aqueel Rollers).....	32
DDL600 Roll Assembly.....	34
HD, V & ML Rollers.....	36
Aqueel II Roller Assembly.....	38

### TurboJet

OSR Platform Assembly.....	40
Following Harrow Assembly.....	42

### Hydraulics

3.0m Tine Hydraulic Circuit.....	44
----------------------------------	----

### Decals

Safety/Maintenance Decal.....	48
Safety/Maintenance Decal Location.....	50

---

**Contents (Alphabetical Order)**

3.0m Tine Hydraulic Circuit.....	44
Aqueel II Roller Assembly.....	38
Chassis Assembly.....	6
DD600 Pillar Assembly.....	28
DD600 Roll Assembly.....	30
DDL600 Roll Assembly.....	34
Disc Arm Assembly (Single Hub).....	14
Disc Blades.....	16
Disc Hub Configurations.....	18
Following Harrow Assembly.....	42
Front Light Assembly.....	10
HD, V & ML Rollers.....	36
OSR Platform Assembly.....	40
Rear Light Assembly.....	12
Roll Pillar (DDL 600, HD, V, ML & Aqueel Rollers).....	32
Safety/Maintenance Decal.....	48
Safety/Maintenance Decal Location.....	50
Scraper Rail Assembly.....	26
Tine Assembly.....	20
Tine Pocket Assembly.....	22
Toolbox Assembly.....	8

## Using This Manual

This manual is divided into sections. The first section contains General Information, a Table of Contents and an Alphabetical Page Index.

The remaining sections divide the machine into segments (i.e. Frames, Hydraulics, etc.) which illustrate and list all parts.

The Great Plains parts in this manual are specially designed for this machine and should be replaced with Great Plains parts only.

The information in this manual is current at printing. Some parts may change to assure top performance.

Right-hand and left-hand as used in this manual are determined by facing the direction the machine will travel while in use.

Below is an example of two facing pages from a parts manual. Familiarize yourself with the contents of these pages.

## Manual Replacement

Replacement manuals are available. Refer to your dealer for additional information.

## Manual Revisions

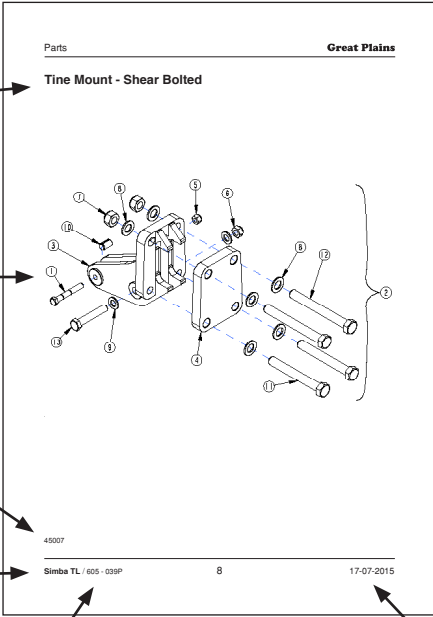
When this manual is revised, the modification date is printed on the front cover and on the revised page(s).

## Touch-up Paint

Repaint parts where paint is worn or scratched to prevent rust. Aerosol touch-up paint is available. To order use Great Plains parts numbers below:

- GP Green 821-001C
- GP Black 821-002C

**Illustration Title** → Tine Mount - Shear Bolted

**Illustration** → 

**Illustration Number** → 45007

**Machine** → Simba TL / 605 - 039P

**Manual Part Number** → 8

**Modification Date** → 17-07-2015

**Parts List** →

Item	Part No.	Part Description	Comments
1	604-059D	HHCS M12X1.75X88 GR10.9 SPTHD	
2	605-038A	SHEAR BOLT UNIT C/W CPLATE	COMPLETE UNIT AS SHOWN
3	606-041H	TINE SHEAR CLAMP	
4	606-078D	PLATE 25MM	
5	803-281C	NUT HEX NYLOCK M12X1.75 FLT	
6	803-282C	NUT HEX M16X2.00 NYLON INSERT	
7	803-283C	NUT HEX NYLOCK M20X2.5	
8	804-244C	WASHER FLAT M20 FLT	
9	804-247C	WASHER FLAT M16 FLT	
10	827-143C	BUSH SPRUNG - 016.5X013.5X26.15	
11	842-050C	HHCS M20X2.5X160 GR8.8	
12	842-051C	HHCS M20X2.5X180 GR8.8	
13	842-058C	HHCS M16X20X90 GR8.8 SPTHD	

17-07-2015

**Page number** → 9

Simba TL / 605 - 039P

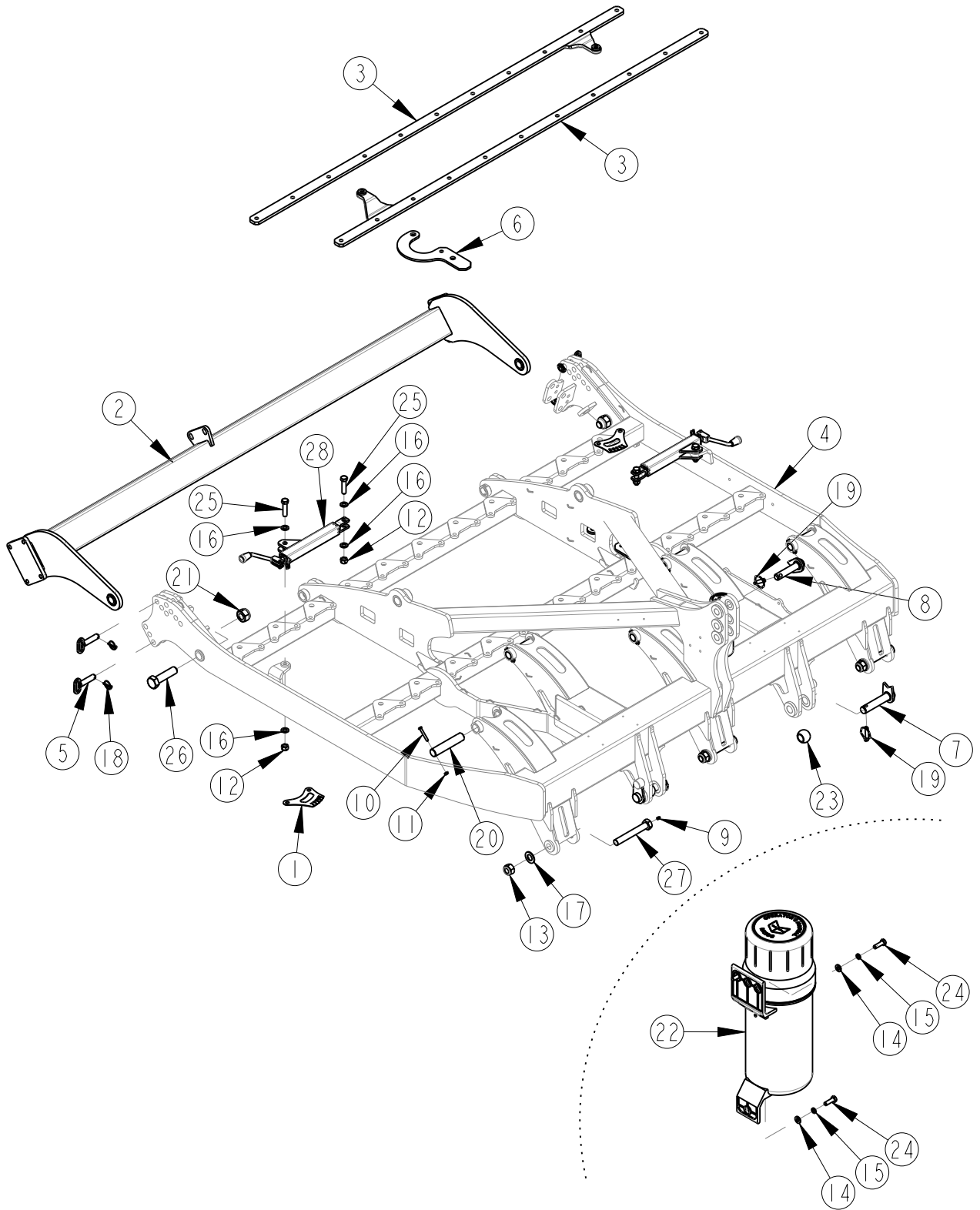
## Hardware Legend

ADJ	Adjuster	HWHMS	Hex Washer Head Machine Screw
AR	As Required	HXBHCS	Hex Socket Button Head Cap Screw
BSP	British Standard Pipe	J	Hex Jam Nut
C	Cap Screw	JIC	37 Degree Tapered Thread
CP	Cotter Pin	L	Helical Spring Lock Washer
CPHSSS	Cup Point Hex Socket Set Screw	LH	Left Hand
CPSHSS	Cup Point Square Head Set Screw	LUG	Lug Bolt
CPSQHSS	Cup Point Square Head Set Screw	NFC	National Fine Cap Screw
CRFCHMS	Cross Recess Flat Countersunk Head Mach. Screw	NPSM	National Pipe Straight Mechanical
CRPHMS	Cross Recess Pan Head Machine Screw	NPTF	National Pipe Taper Fuel
CRPHTFS	Cross Recess Pan Head Thread Forming	P	Wide Plain Washer
CRRHMS	Cross Recess Round Head Machine Screw	PHMS	Pan Head Machine Screw
CRTHMS	Cross Recess Truss Head Machine Screw	PLOW	Plow Bolt
CSNB	Countersunk Square Neck Bolt	QRC	Quick Release Coupling
FHMS	Flat Head Machine Screw	RH	Right Hand
FTC	Full Thread Cap Screw	RHMS	Round Head Machine Screw
H	Hex Nut	RHSNB	Round Head Square Neck Bolt
HCLN	Hex Center Lock Nut	SFCHMS	Slotted Flat Countersunk Head Machine Screw
HFLCS	Hex Flange Lock Cap Screw	SFHMS	Slotted Fillister Head Machine Screw
HFS	Hex Flange Screw	SP	Special
HFSLN	Hex Flange Serrated Lock Nut	SP SCREW	Special Screw
HFSS	Hex Flange Serrated Screw	SQHSS	Square Head Set Screw
HHCS	Hex Head Cap Screw or Metric Bolt	SRHMS	Slotted Round Head Machine Screw
HSBHCS	Hex Socket Button Head Cap Screw	SSS	Socket Set Screw
HSFCHCS	Hex Socket Flat Countersunk Head Cap Screw	STCS	Self Tapping Cap Screw
HSHCS	Hex Socket Head Cap Screw	STHMS	Slotted Truss Head Machine Screw
HSSS	Hex Socket Head Screw	WHEEL	Wheel Studs and Hub Long Bolts
HTLN	Hex Top Lock Nut	WING	Wing Bolt
HWHCS	Hex Washer Head Cap Screw		

## Replacement Hardware

The Hardware Legend above lists hardware abbreviations used in the parts lists. The use of improper grades of hardware can result in personal injury, damage to equipment, or loss of property.

# Chassis Assembly

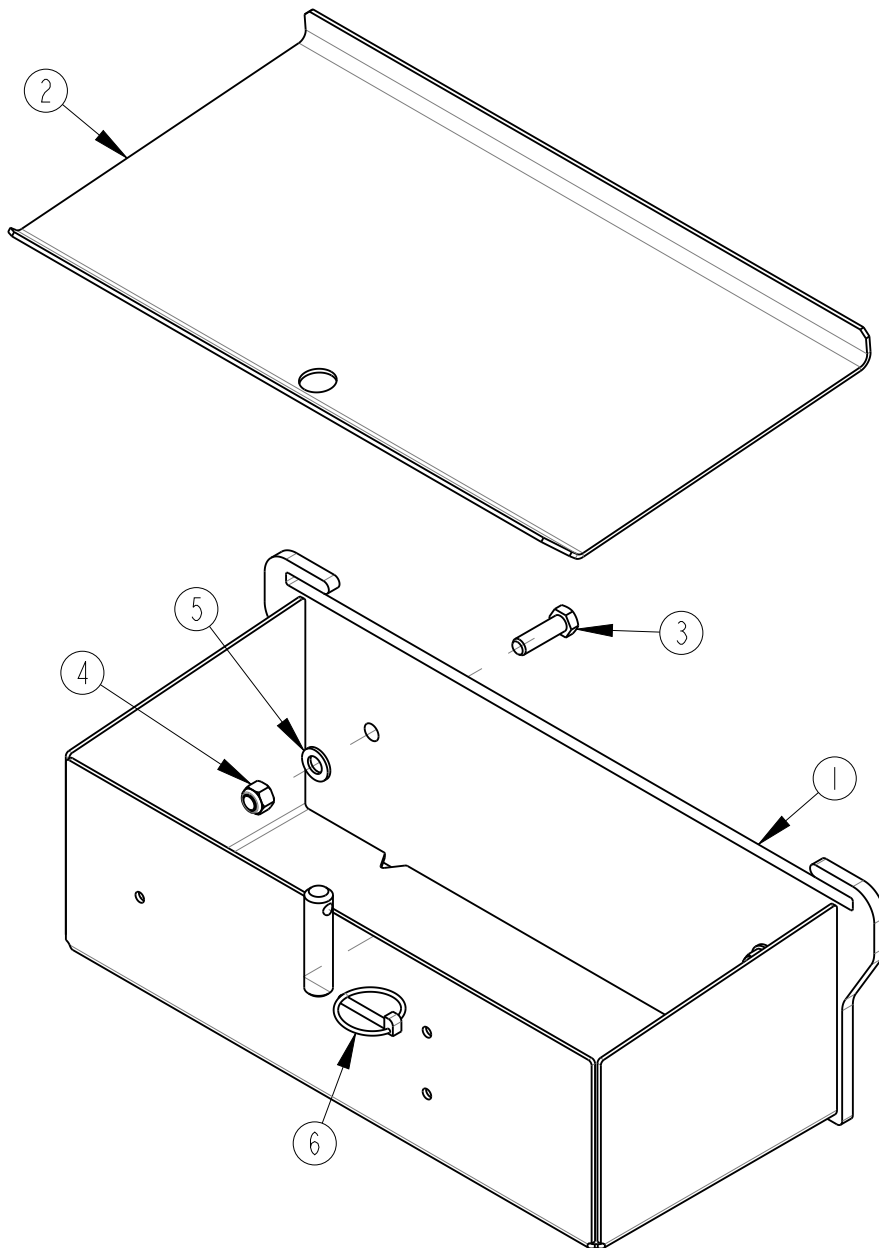


44000

## Chassis Assembly

Item	Part No.	Part Description	Comments
1	601-060D	ANGLE GUIDE	
2	604-002H	ROLL FRAME-DTX300	3.0m Machine only
-	604-004H	ROLL FRAME-DTX350	3.5m Machine only (not shown)
3	604-007H	TRACK ROD - 11 HOLE	3.0m Machine only
-	604-035H	TRACKROD - 13 HOLE	3.5m Machine only (not shown)
4	604-020H	CHASSIS - DTX300-TR	3.0m Machine only
-	604-022H	CHASSIS - DTX350-TR	3.5m Machine only (not shown)
5	604-033H	PIN Ø25 X 95 HANDLED	
6	604-058D	PLATE 10MM	
7	604-066H	PIN LOWER LINK CAT 3	3.0m Machine only
-	611-025H	LOWER LINK PIN CAT 4	3.5m Machine only (not shown)
8	605-010H	PIN UPPER LINK CAT 3	3.0m Machine only
-	611-026H	TOP LINK PIN CAT 4	3.5m Machine only (not shown)
9	800-432C	GREASE ZERK STRAGHT 1/8-28 BSP	
10	802-975C	HHCS M10X1.5X70 GR8.8	
11	803-280C	NUT HEX NYLOCK M10X1.5 PLT	
12	803-393C	NUT HEX NYLOCK M20X2.5	
13	803-416C	NUT HEX M30X3.5 NYLON INSERT	
14	804-160C	WASHER FLAT M6 PLT	
15	804-226C	WASHER LOCK M6 PLT	
16	804-244C	WASHER FLAT M20 PLT	
17	804-257C	WASHER FLAT M30 - OD60MM PLT	
18	805-448C	LYNCH PIN CAT 1	
19	805-468C	LYNCH PIN CAT 3	
20	805-475C	PIN DIA.40X200 TYPE P	
21	814-460C	NUT HEX M36X4 NYL INSERT	
22	817-928C	MANUAL HOLDER	
23	827-113C	BALL CAT 3 LOWER Ø37	
24	842-021C	HHCS M6X1X20 GR8.8	
25	842-052C	HHCS M20X2.5X80 GR8.8	
26	842-056C	HHCS M36X4X140 GR8.8	
27	842-064C	HHCS M30X3.5X210 GR8.8	
28	891-301C	ADJUSTER 350-600	

# Toolbox Assembly



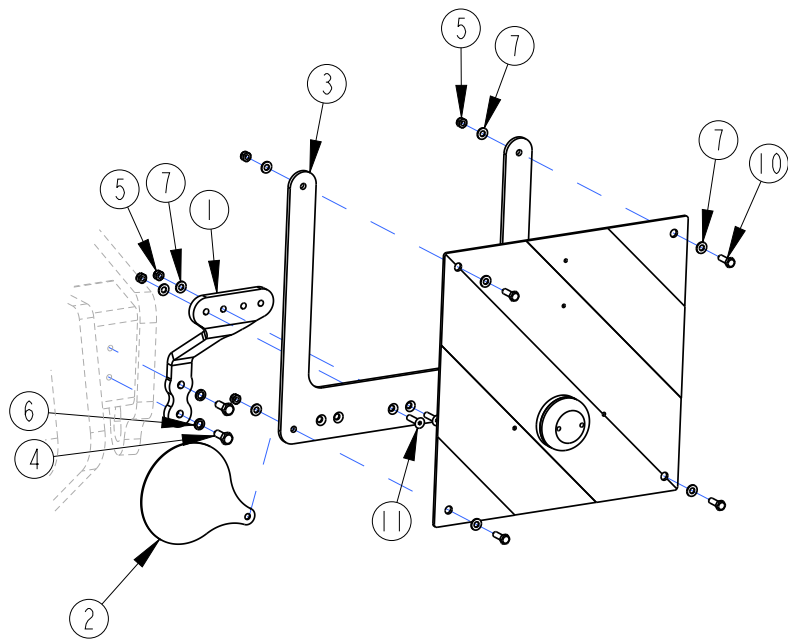
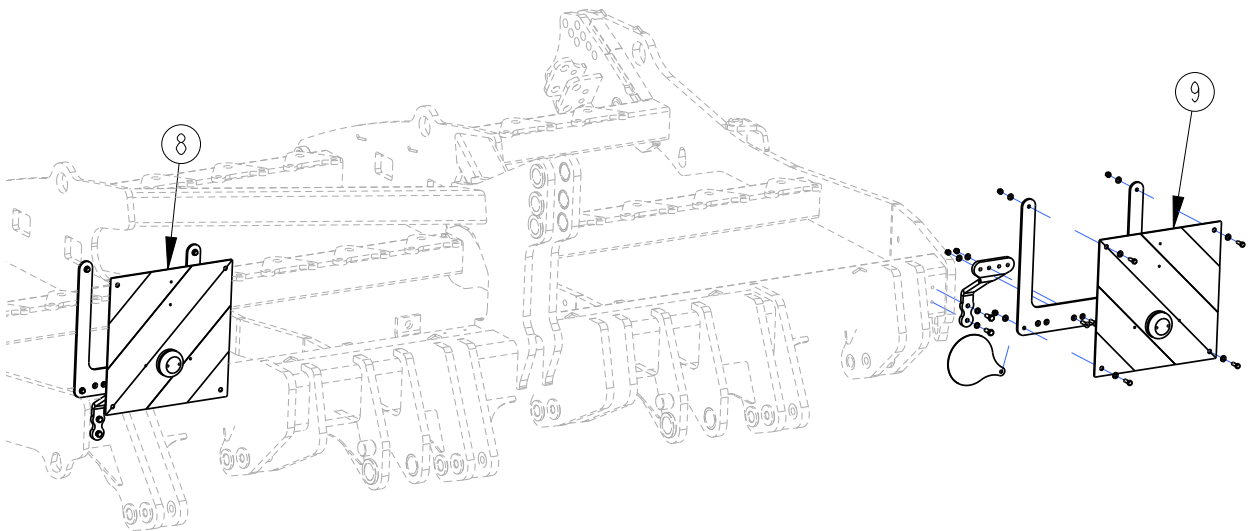
44023



## Toolbox Assembly

Item	Part No.	Part Description	Comments
1	603-036H	TOOLBOX BODY	
2	603-170D	TOOLBOX LID	
3	802-977C	HHCS M12X1.75X40 GR8.8	
4	803-281C	NUT HEX NYLOCK M12X1.75 PLT	
5	804-246C	WASHER FLAT M12 PLT	
6	805-448C	LYNCH PIN CAT 1	

# Front Light Assembly

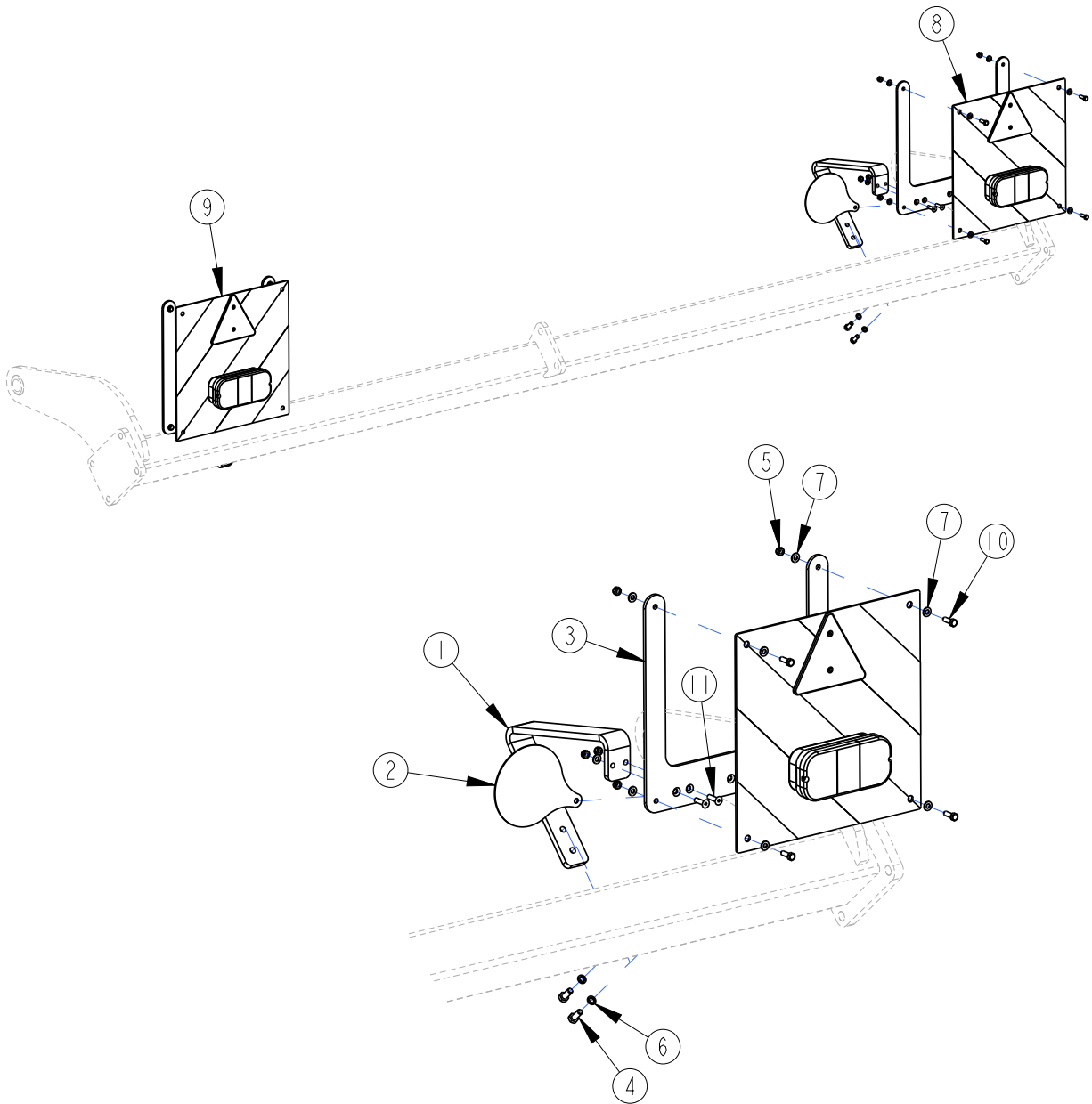


44010

## Front Light Assembly

Item	Part No.	Part Description	Comments
1	601-356D	PLATE 12MM	
2	603-563D	DECAL MOUNT - SPEED	
3	608-258D	PLATE 6MM	
4	802-997C	HHCS M10X1.5X25 GR8.8	
5	803-422C	NUT HEX M8X2.00 NYLON INSERT	
6	804-158C	WASHER SPRING LOCK M10 PLT	
7	804-161C	WASHER FLAT M8 PLT	
8	833-610C	LIGHT BOARD FRH	
9	833-611C	LIGHT BOARD FLH	
10	842-023C	HHCS M8X1.25X25 GR8.8 FTHD	
11	842-057C	HSFCHCS M8X30 CSK	

# Rear Light Assembly

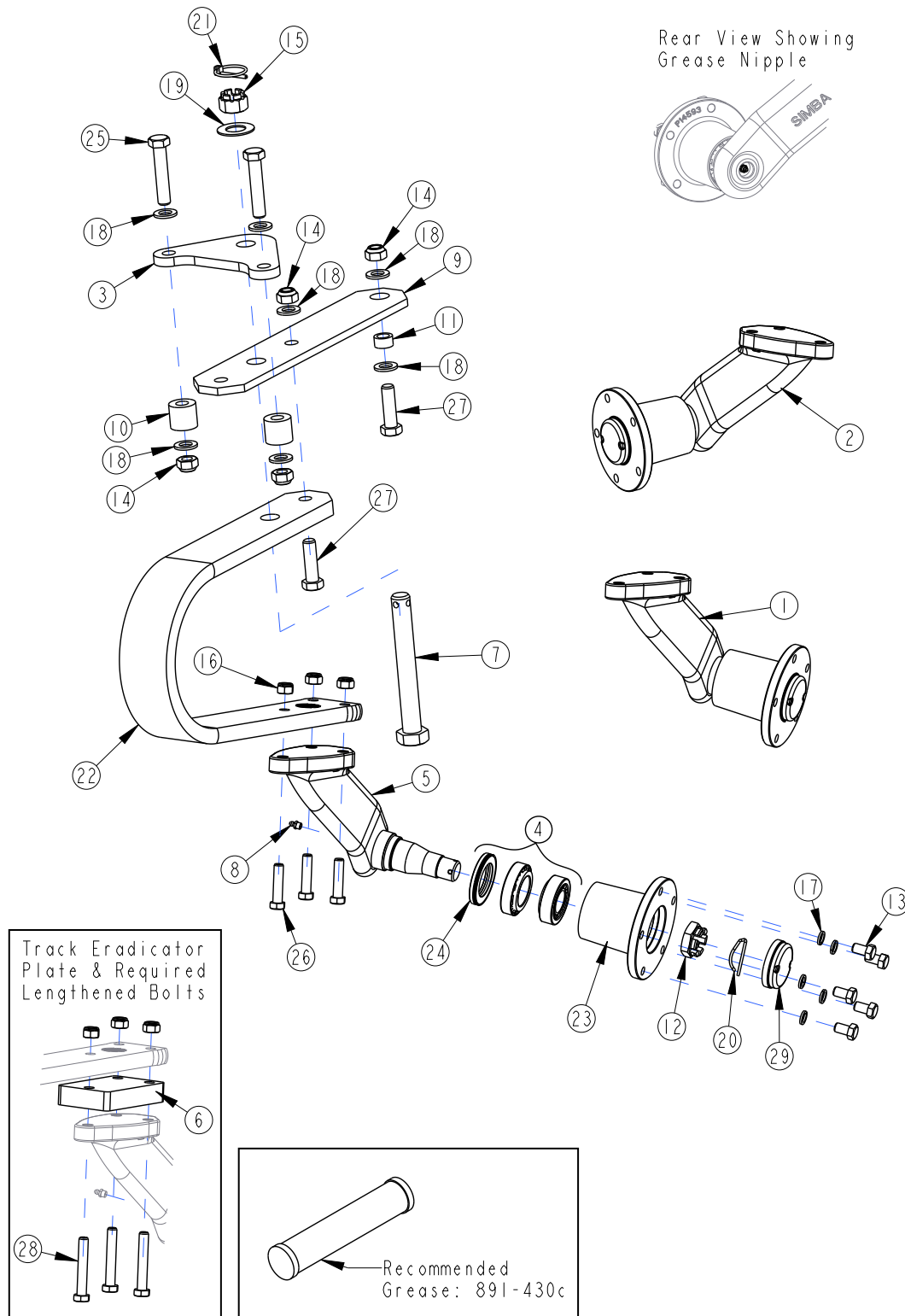


44011

## Rear Light Assembly

Item	Part No.	Part Description	Comments
1	601-357D	PLATE 12MM	
2	603-563D	DECAL MOUNT - SPEED	
3	608-258D	PLATE 6MM	
4	802-997C	HHCS M10X1.5X25 GR8.8	
5	803-422C	NUT HEX M8X2.00 NYLON INSERT	
6	804-158C	WASHER SPRING LOCK M10 PLT	
7	804-161C	WASHER FLAT M8 PLT	
8	833-608C	LIGHT BOARD RRH	
9	833-609C	LIGHT BOARD RLH	
10	842-023C	HHCS M8X1.25X25 GR8.8 FTTHD	
11	842-057C	HSFCHCS M8X30 CSK	

# Disc Arm Assembly (Single Hub)

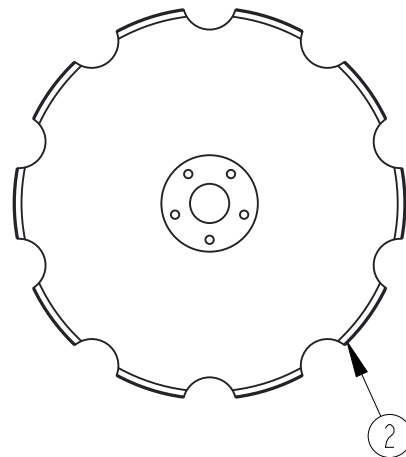
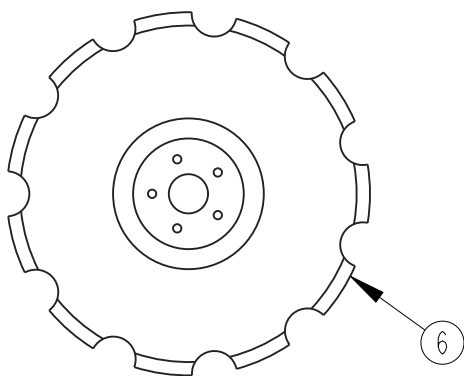
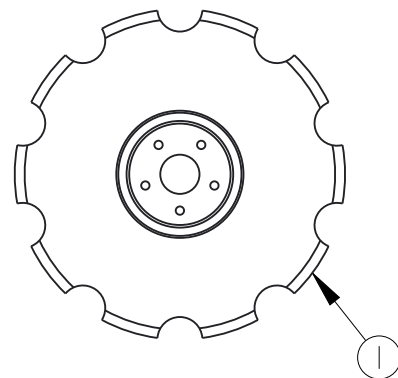
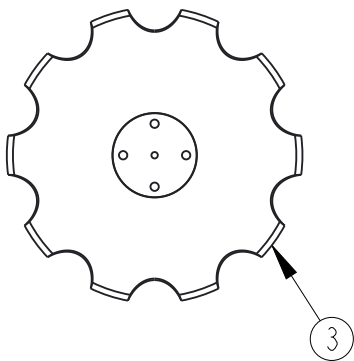
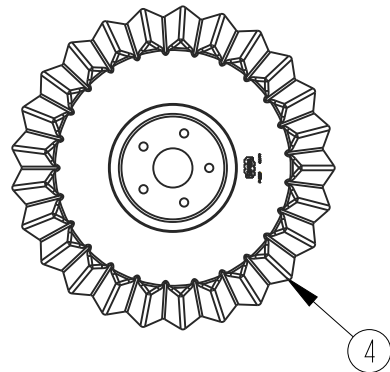
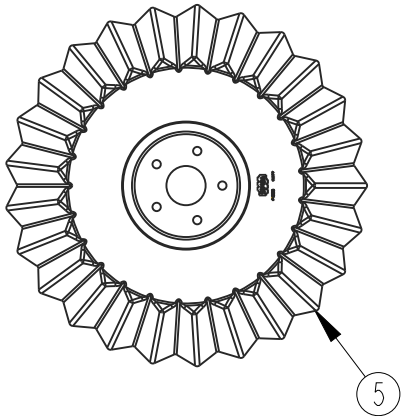


45003

## Disc Arm Assembly (Single Hub)

Item	Part No.	Part Description	Comments
1	601-012S	DISC ARM UNIT RH	
2	601-013S	DISC ARM UNIT LH	
3	601-024D	PLATE 12MM	
4	601-027V	BEARING + SEAL KIT COMPLETE	
5	601-036K	DISC UNIT LH	
6	601-394D	X-PRESS LEAF SPACER	
7	601-440D	HHCS M24X3X185 GR8.8 SPTH	
8	603-570D	NIPPLE - GREASE M8	
9	604-062D	TRACK ARM	
10	604-063D	BUSH Ø36XØ16.5X31MM	
11	604-064D	BUSH Ø24XØ16X13MM	
12	800-424C	NUT-CASTLE M27X1.5	
13	802-976C	HHCS M12X1.25X20 GR8.8	
14	803-282C	NUT HEX M16X2.00 NYLON INSERT	
15	803-413C	NUT CASTLE M24X3	
16	803-415C	NUT HEX M12X1.5 NYLON INSERT	
17	804-159C	WASHER SPRING LOCK M12 PLT	
18	804-247C	WASHER FLAT M16 PLT	
19	804-271C	WASHER MACH 48X26.5X2 PLT	
20	805-445C	SPRING PIN	
21	805-465C	LYNCH PIN CAT 0	
22	807-313C	SPRING COMP 80 X 20MM	
23	812-405C	HUB CASTING	
24	822-269C	DSGN START BLANK ASSY	
25	842-034C	HHCS M16X2X80 GR8.8	
26	842-038C	HHCS M12X1.5X50 GR10.9 SPTH	
27	842-066C	HHCS M16X2X55 GR8.8	
28	842-223C	HHCS M12X1.75X75 GR10.9	
29	891-262C	HUB CAP	

### Disc Blades



45014

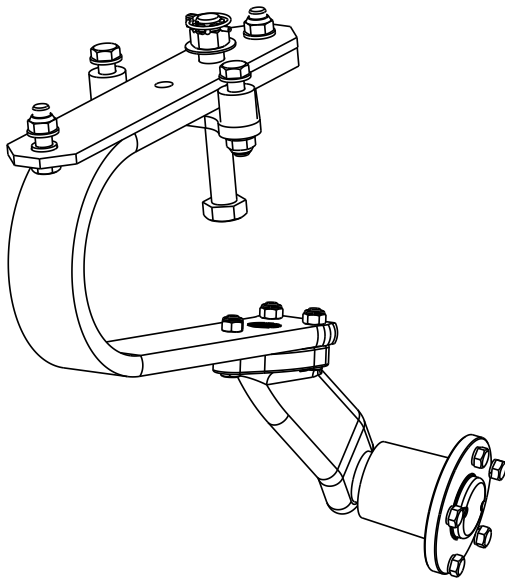


**Disc Blades**

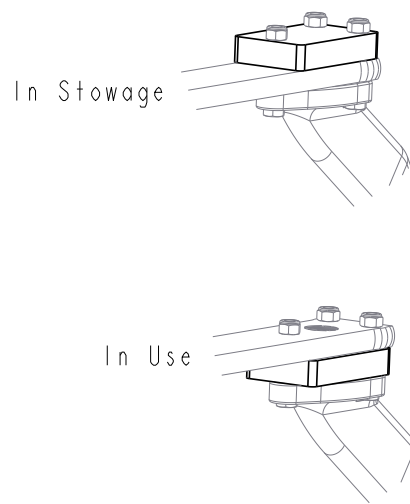
<b>Item</b>	<b>Part No.</b>	<b>Part Description</b>	<b>Comments</b>
1	820-460C	DISC BLADE Ø515X6	
2	820-461C	DISC BLADE Ø515X6	
3	820-462C	DISC BLADE CUT Ø460	
4	820-534C	SOILRAZOR - Ø510X5	
5	820-542C	SOILRAZOR - Ø560 55	

# Disc Hub Configurations

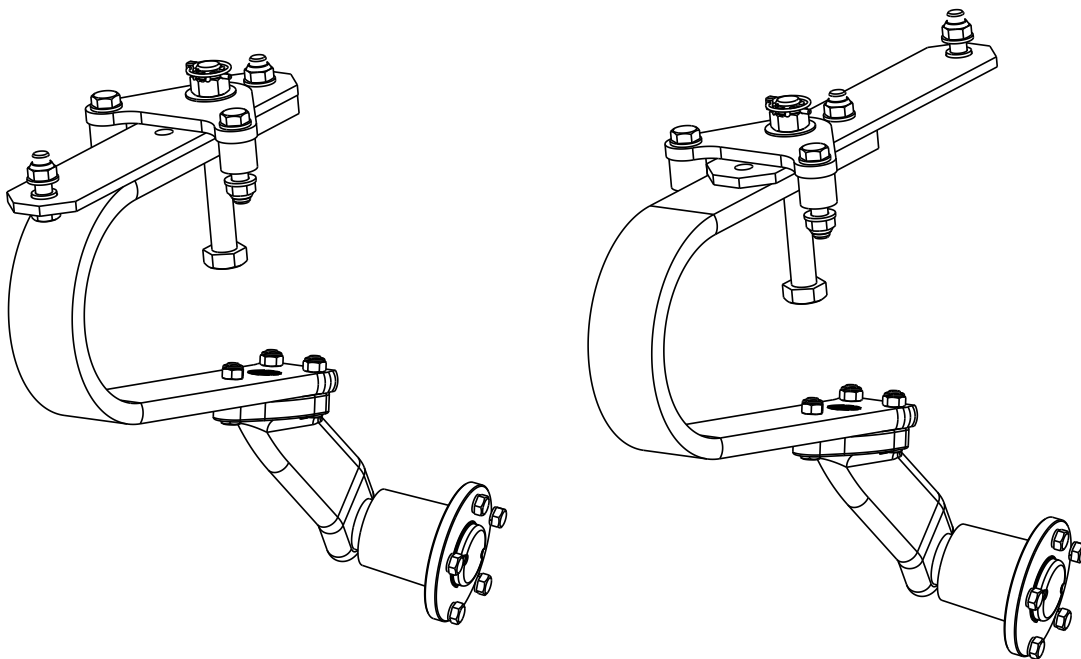
SLD/SL700 ASSEMBLY



TRACK ERADICATOR PLATE



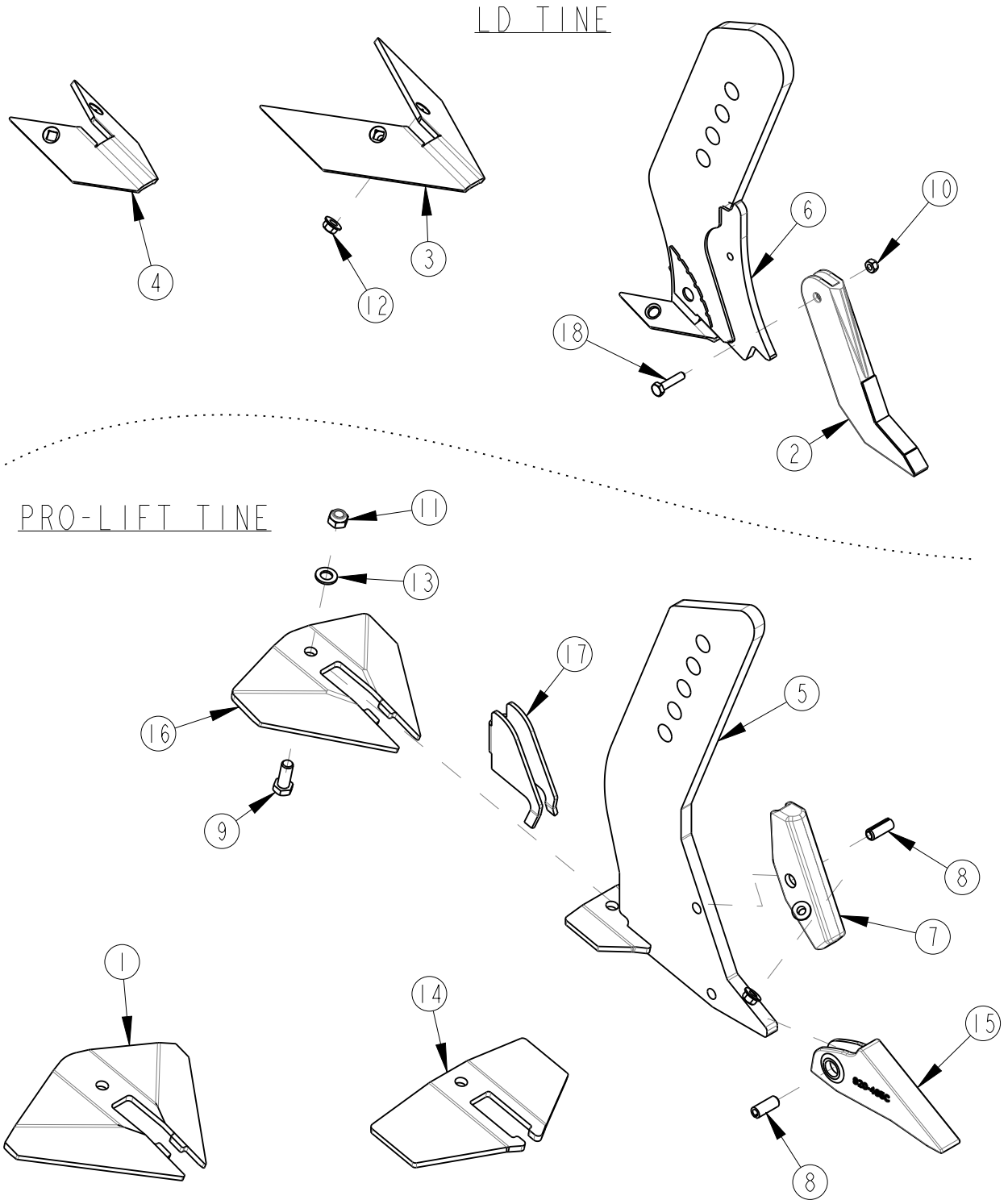
SL 4/5/6, ALL MXP, TRXP & DTX ASSEMBLY



45009

**This page has been left blank**

# Tine Assembly



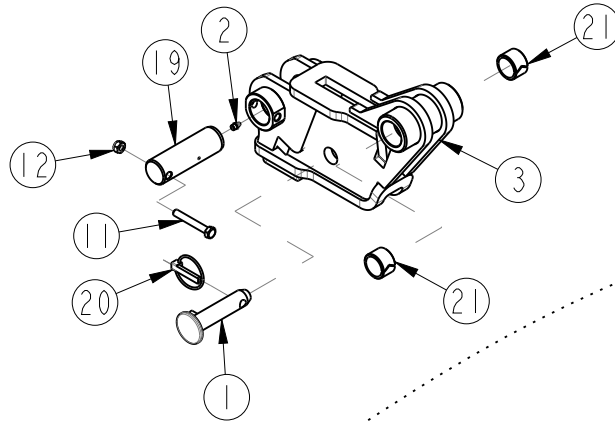
44019

## Tine Assembly

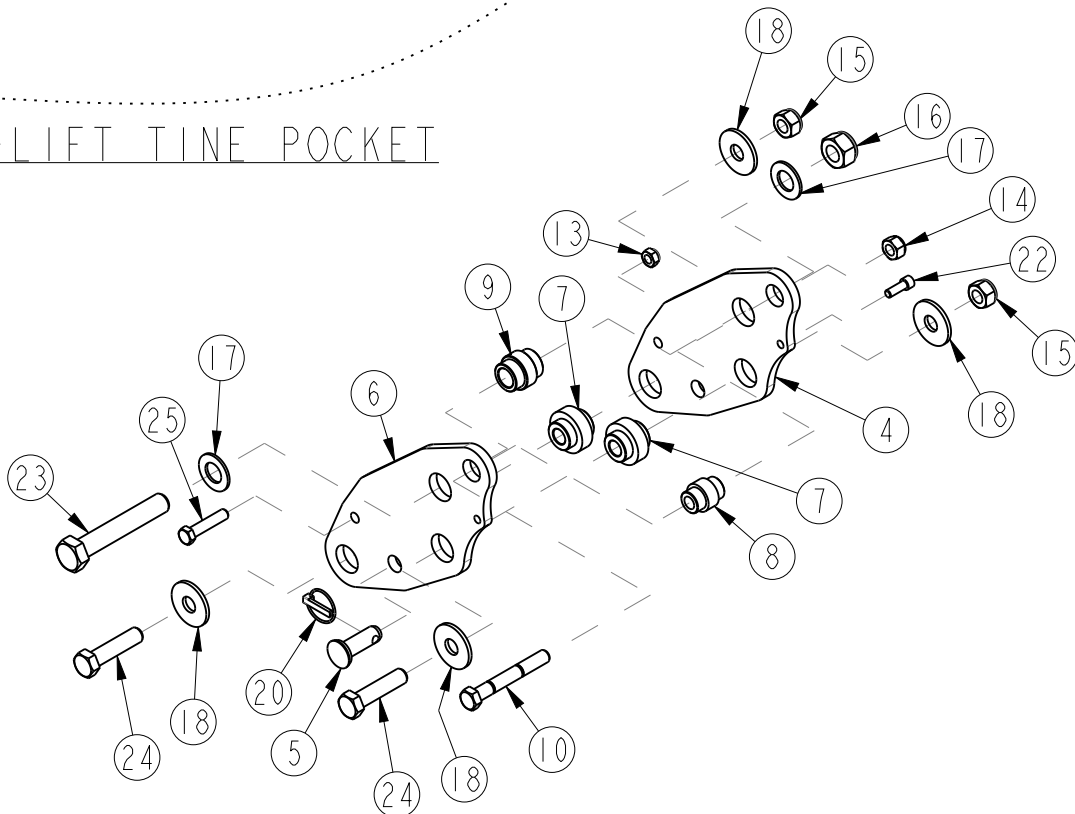
Item	Part No.	Part Description	Comments
1	602-359D	PLATE 10MM	
2	603-396D	EP POINT	
3	603-401D	WING LD	
4	603-676D	WING LD MINI	
5	604-034H	DTX TINE 400 W/DEPTH	
6	604-094H	TINE - LD DTX AR	604-095H used pre 2012
7	604-292D	WEARSHIN PROLIFT REVERSIBLE	
8	800-442C	ROLL PIN Ø16X40	
9	802-703C	HHCS M16X2.0X40 GR8.8	
10	803-280C	NUT HEX NYLOCK M10X1.5 PLT	
11	803-282C	NUT HEX M16X2.00 NYLON INSERT	
12	803-420C	NUT HEX WHIZ M12X1.75	
13	804-247C	WASHER FLAT M16 PLT	
14	820-483C	WING - PROLIFT LOW	
15	820-485C	POINT - PROLIFT	
16	820-486C	PLATE 10MM	
17	820-487C	WEAR SHROUD	
18	842-025C	HHCS M10X1.5X45 GR8.8	

# Tine Pocket Assembly

## AR TINE POCKET



## PRO-LIFT TINE POCKET



44020

## Tine Pocket Assembly

Item	Part No.	Part Description	Comments
1	602-300H	PIN - D25X115	
2	603-570D	NIPPLE - GREASE M8	
3	604-021H	TINE POCKET	
4	604-053H	TINE POCKET LH	
5	604-175D	BAR Ø45	
6	604-239D	TINE POCKET RH	
7	604-287D	TINE SUPPORT BUSH	
8	604-298D	BAR DIA. 45	
9	604-299D	BAR DIA. 45	
10	604-322D	HHCS M20X2.5X150 GR8.8	
11	802-975C	HHCS M10X1.5X70 GR8.8	
12	803-280C	NUT HEX NYLOCK M10X1.5 PLT	
13	803-282C	NUT HEX M16X2.00 NYLON INSERT	
14	803-393C	NUT HEX NYLOCK M20X2.5	
15	803-412C	NUT HEX M24X3 NYLON INSERT	
16	803-416C	NUT HEX M30X3.5 NYLON INSERT	
17	804-257C	WASHER FLAT M30 - OD60MM PLT	
18	804-266C	WASHER FLAT M24 - OD72MM	
19	805-454C	PIN Ø40X125 TYPE R	
20	805-482C	LYNCH PIN CAT 2 LOCKING	
21	827-138C	BUSH SPRUNG Ø40XØ32X30	
22	842-024C	HSHCS M12X1.75X35 GR8.8	
23	842-043C	HHCS M30X3.5X180 GR8.8	
24	842-071C	HHCS M24X3X100 GR8.8	
25	842-073C	HHCS M16X2X75 GR8.8	

# Tine Pocket Assembly

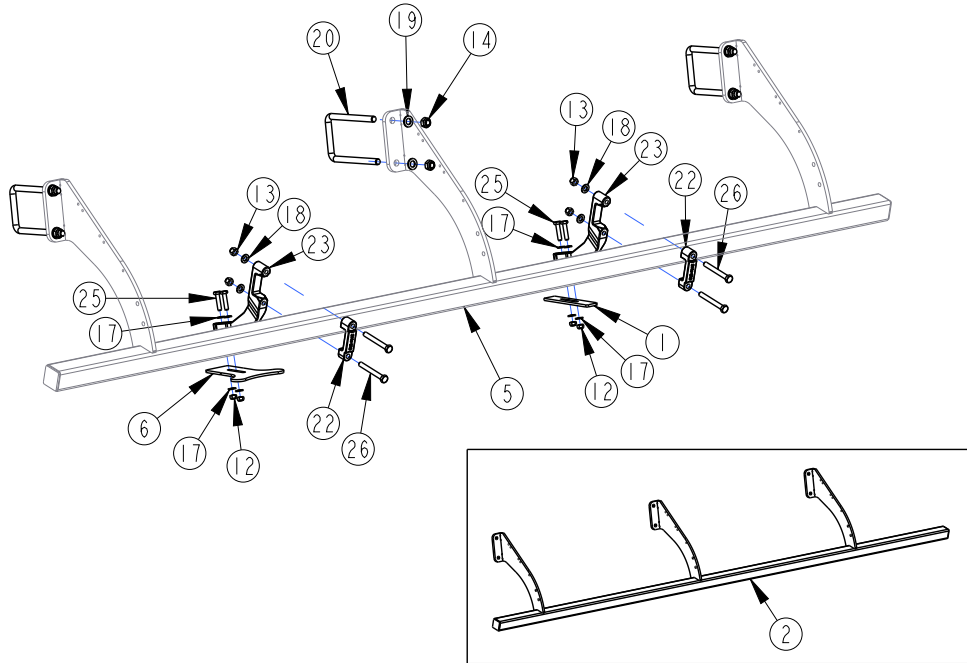
Item	Part No.	Part Description	Comments
------	----------	------------------	----------



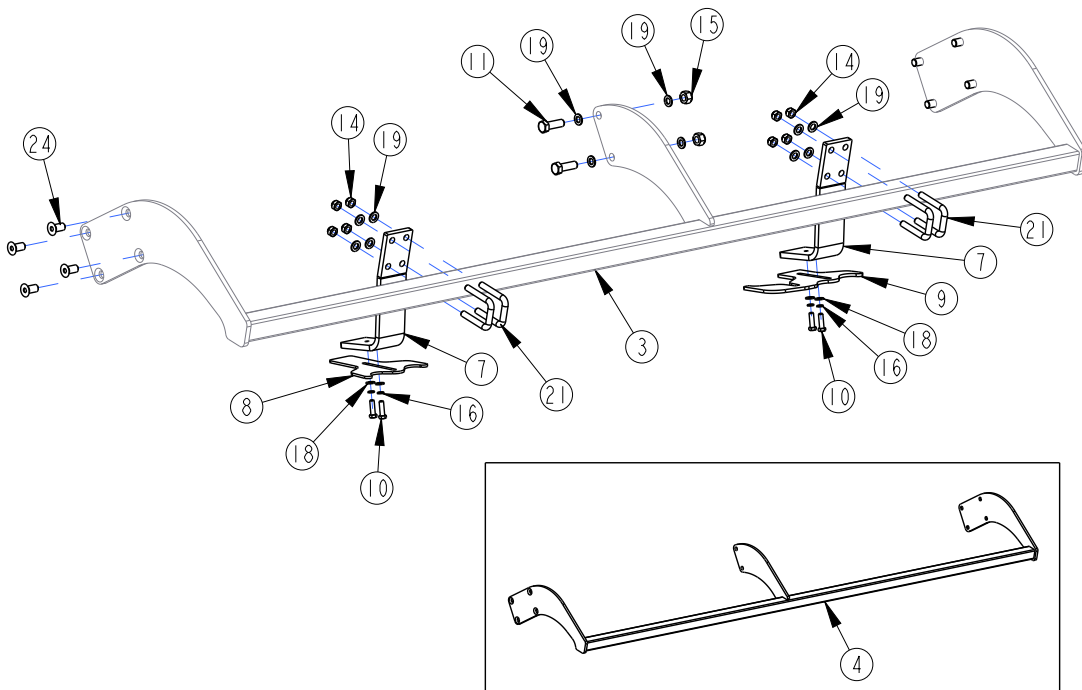
**This page has been left blank**

# Scraper Rail Assembly

DDL600, ML & V Roller



DD600

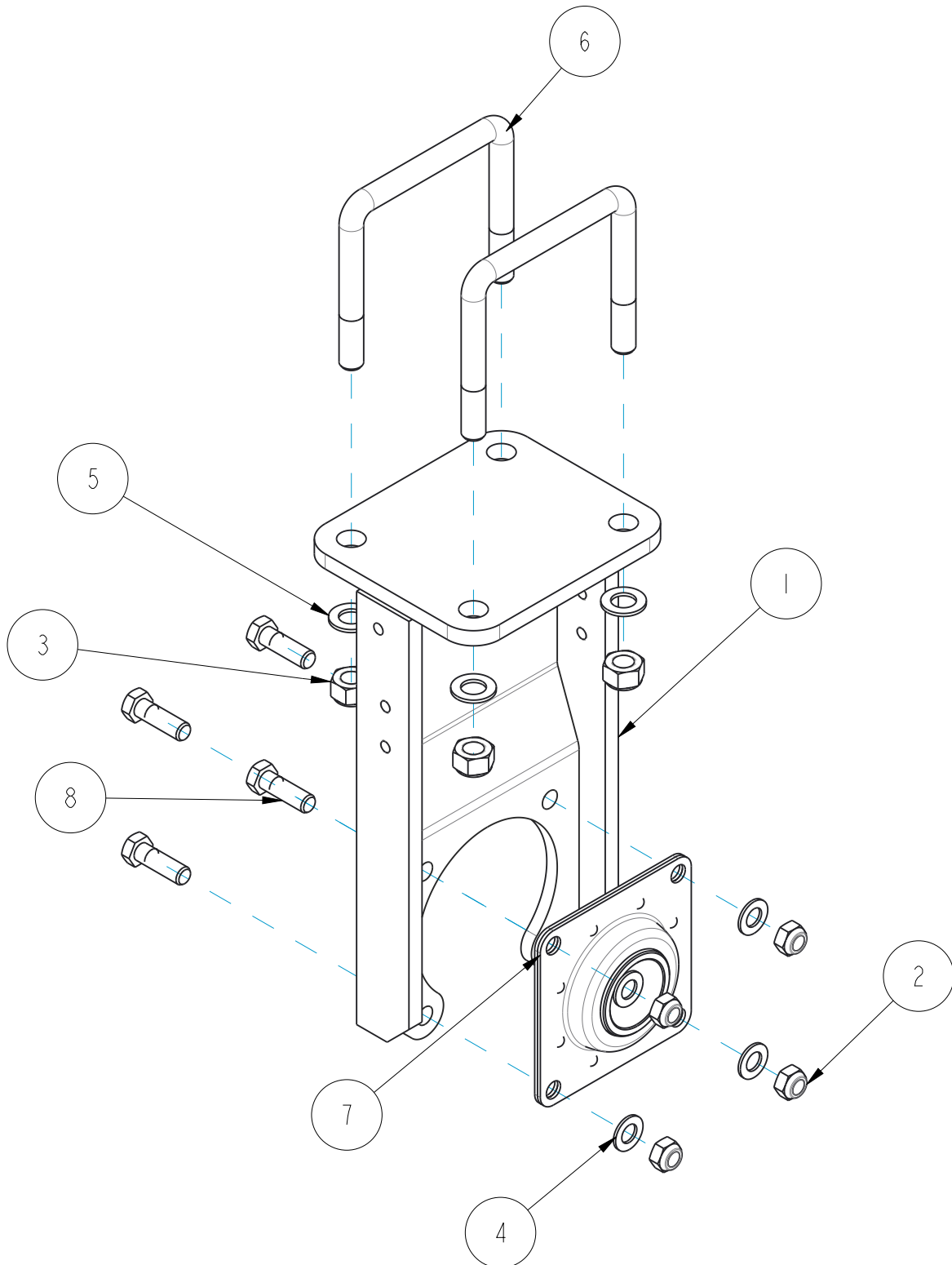


44005

## Scraper Rail Assembly

Item	Part No.	Part Description	Comments
1	603-534D	SCRAPER PLATE 150MM	
2	604-003H	SCRAPER RAIL- 3.5M	
3	604-005H	SCRAPER RAIL DTX300-DD600	
4	604-006H	SCRAPER RAIL DTX350-DD600	
5	604-054H	SCRAPER RAIL - 3M	
6	604-247D	SCRAPER PLATE	
7	611-064D	PLATE 15MM	
8	611-065D	PLATE 6MM	
9	611-208D	PLATE 8MM	
10	802-977C	HHCS M12X1.75X40 GR8.8	
11	802-988C	HHCS M20X2.5X60 GR10.9	
12	803-280C	NUT HEX NYLOCK M10X1.5 PLT	
13	803-281C	NUT HEX NYLOCK M12X1.75 PLT	
14	803-282C	NUT HEX M16X2.00 NYLON INSERT	
15	803-393C	NUT HEX NYLOCK M20X2.5	
16	804-159C	WASHER SPRING LOCK M12 PLT	
17	804-162C	WASHER FLAT M10 PLT	
18	804-246C	WASHER FLAT M12 PLT	
19	804-247C	WASHER FLAT M16 PLT	
20	806-236C	U-BOLT M16-2.00 X 101 X 190	
21	806-241C	U-BOLT M16X2 X 62 X 100 GR8.8	
22	812-414C	SCRAPER CLAMP PLATE	
23	812-415C	SCRAPER STEM	
24	842-022C	HSFCHCS M20X2.5X40 GR10.9	
25	842-025C	HHCS M10X1.5X45 GR8.8	
26	842-026C	HHCS M12X1.75X100 GR8.8	

# DD600 Pillar Assembly

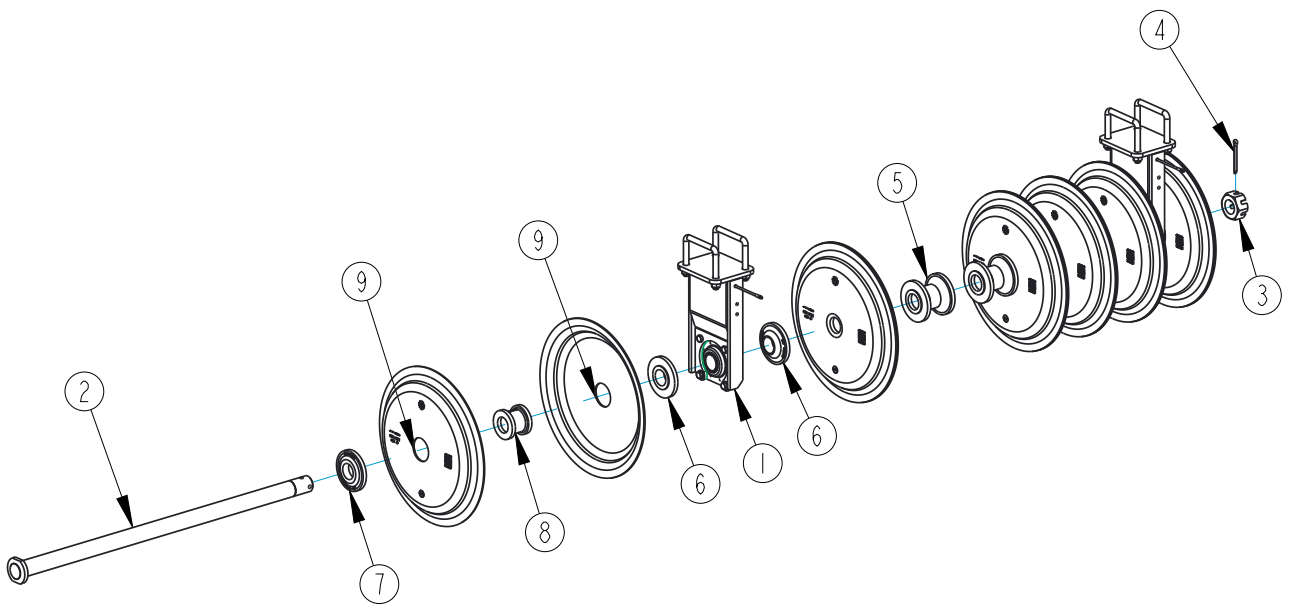


45025

## DD600 Pillar Assembly

Item	Part No.	Part Description	Comments
1	602-004H	PRESS ROLL PILLAR	
2	803-282C	NUT HEX M16X2.00 NYLON INSERT	
3	803-393C	NUT HEX NYLOCK M20X2.5	
4	804-005C	FLAT WASHER M16 NARROW PLT	
5	804-244C	WASHER FLAT M20 PLT	
6	806-243C	U-BOLT M20X2.5 X 152 X 145	
7	822-282C	BEARING - PRESSED Ø61X56 SFL	
8	842-033C	HHCS M16X2X50 GR8.8	

# DD600 Roll Assembly

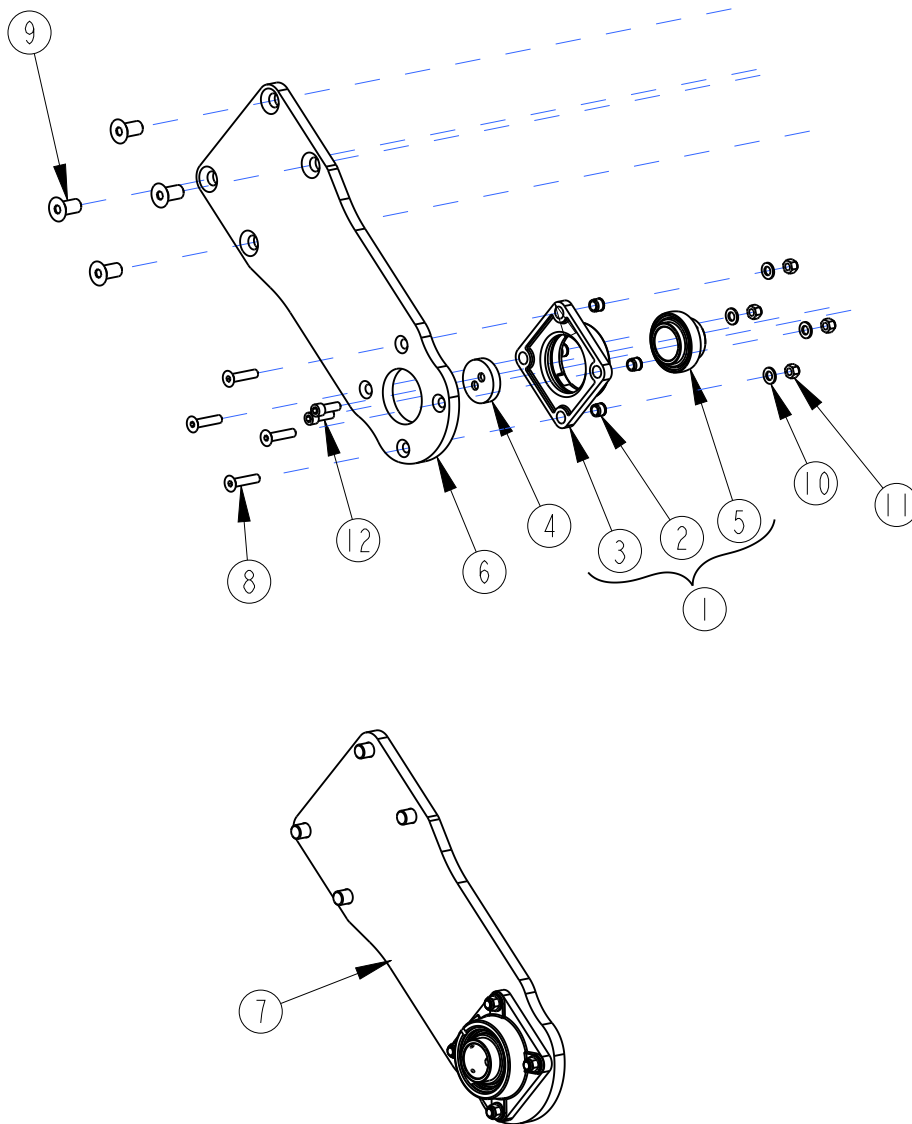


45018

## DD600 Roll Assembly

Item	Part No.	Part Description	Comments
1	602-036K	PILLAR ASSEMBLY STD BRG	
2	602-039H	DD AXLE Ø60X1369MM	
3	803-424C	NUT CASTLE M60X5.5	
4	805-469C	PIN SPLIT Ø10X100	
5	812-408C	DD600 - SPOOL	
6	812-409C	DD600 - BEARING SPOOL	
7	812-410C	DD600 - NUT SPOOL	
8	812-411C	DD600 - INTERNAL SPACER	
9	820-465C	RING-DD600X5MM	

# Roll Pillar (DDL 600, HD, V, ML & Aqueel Rollers)



44006

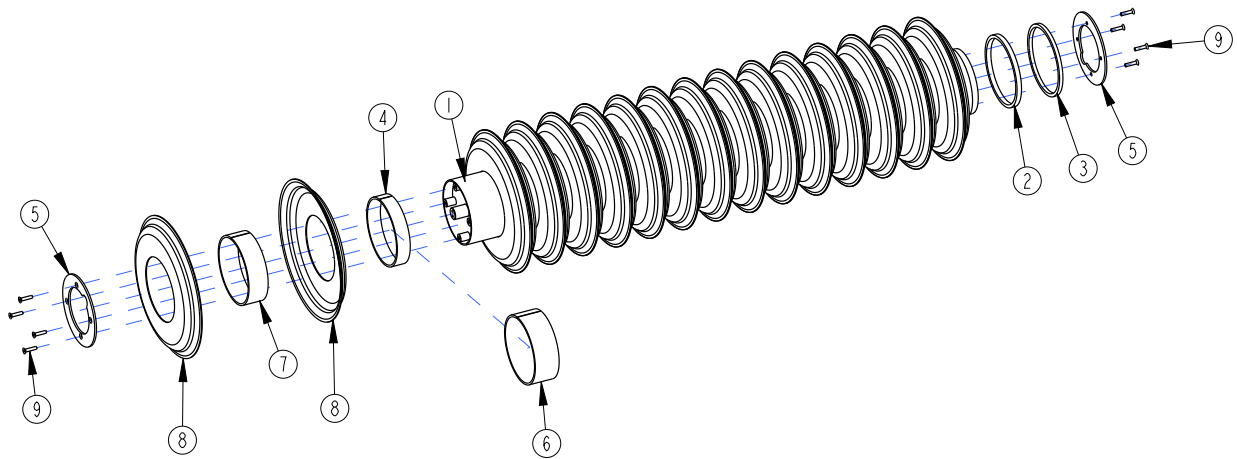


---

**Roll Pillar (DDL 600, HD, V, ML & Aqueel Rollers)**

<b>Item</b>	<b>Part No.</b>	<b>Part Description</b>	<b>Comments</b>
1	601-015S	SCJ50 BEARING COMPLETE	
2	601-032D	BAR DIA. 18.3MM	
3	812-404C	BEARING HOUSING SCJ 50	
4	601-150D	STUB AXLE END WASHER	
5	822-266C	BEARING INNER YCJ 50	
6	604-010D	PLATE 20MM	
7	604-082V	PILLAR - FLANGE FITTING	COMPLETE
8	842-037C	HSFCHCS M12X1.75X55 GR10.9	
9	842-022C	HSFCHCS M20X2.5X40 GR10.9	
10	804-246C	WASHER FLAT M12 PLT	
11	803-281C	NUT HEX NYLOCK M12X1.75 PLT	
12	842-024C	HSHCS M12X1.75X35 GR8.8	

## DDL600 Roll Assembly

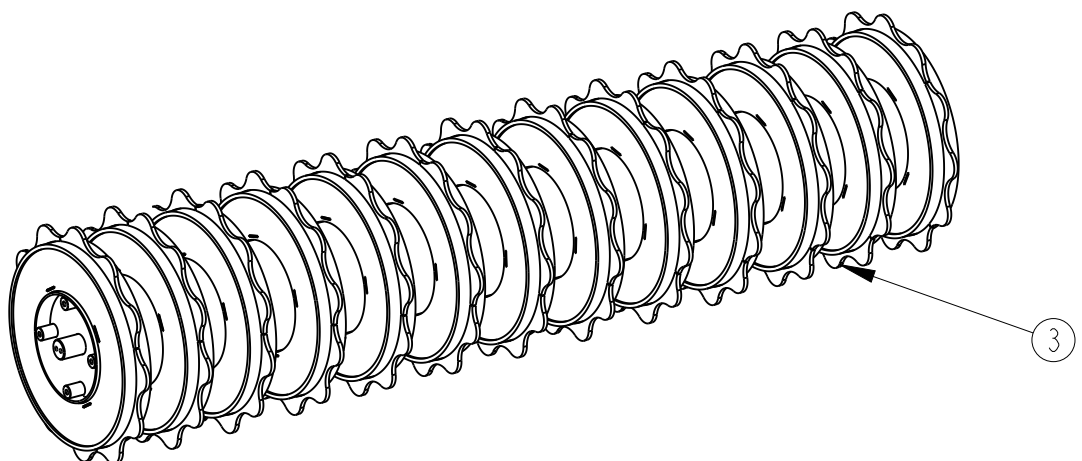
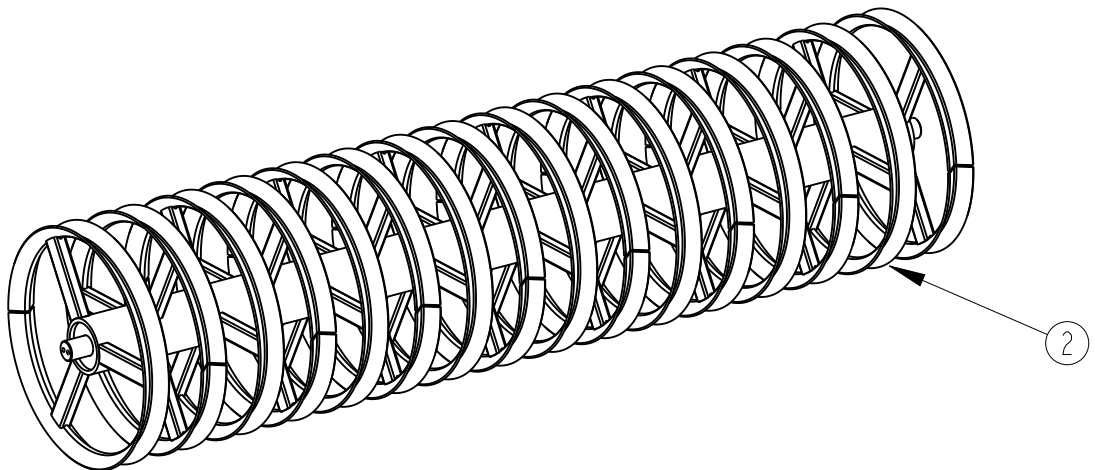
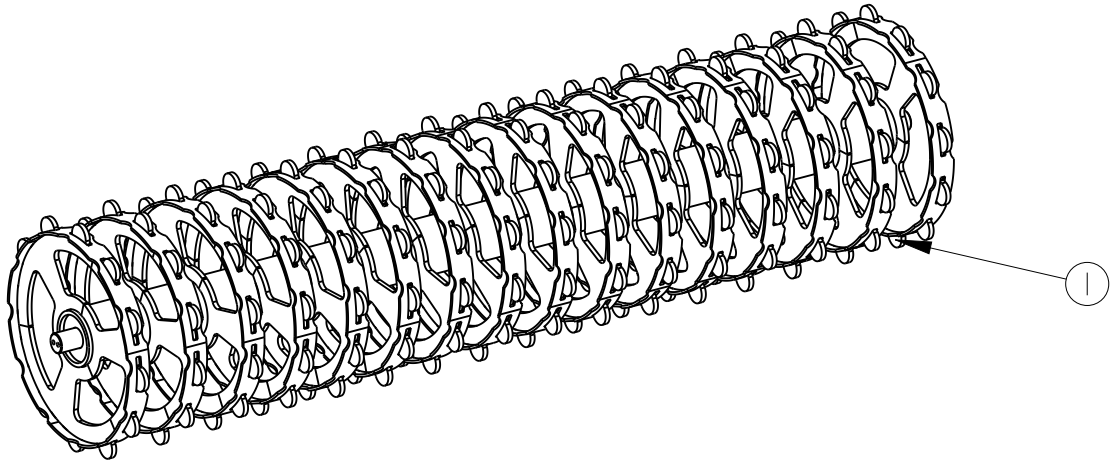


53014

## DDL600 Roll Assembly

Item	Part No.	Part Description	Comments
1	601-165H	ROLL TUBE - 2280MM	
2	601-430D	END SPACER RING 20MM	
3	603-531D	15MM END SPACER RING	
4	603-532D	DDL 600 SPACER 8X58MM	
5	604-242D	RETAINING PLATE	
6	604-243D	DDL 600 SPACER 107MM	
7	604-244D	INTRNL SPACER 86 X 8MM	
8	820-482C	RING-DD600X5MM	
9	842-037C	HSFCHCS M12X1.75X55 GR10.9	

## HD, V & ML Rollers

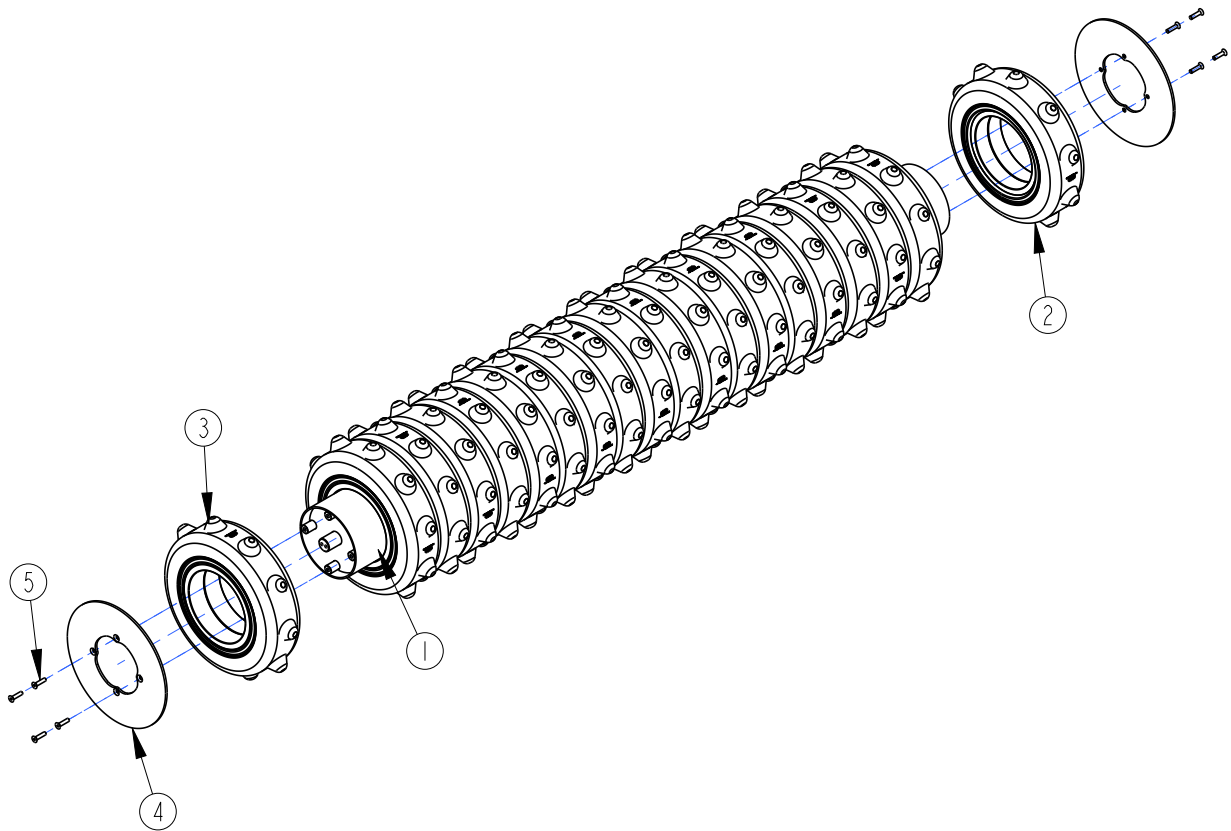


44017

## HD, V & ML Rollers

<b>Item</b>	<b>Part No.</b>	<b>Part Description</b>	<b>Comments</b>
1	601-250H	ML ROLLER - 3.0M	TO SUIT 3.0m MACHINE
	601-251H	ML ROLLER - 3.5M	TO SUIT 3.5m MACHINE
2	601-248H	V ROLLER - 3.0M	TO SUIT 3.0m MACHINE
	601-249H	V ROLLER - 3.5M	TO SUIT 3.5m MACHINE
3	601-246H	HD ROLLER - 3.0M	TO SUIT 3.0m MACHINE
	601-247H	HD ROLLER - 3.5M	TO SUIT 3.5m MACHINE

## Aqueel II Roller Assembly

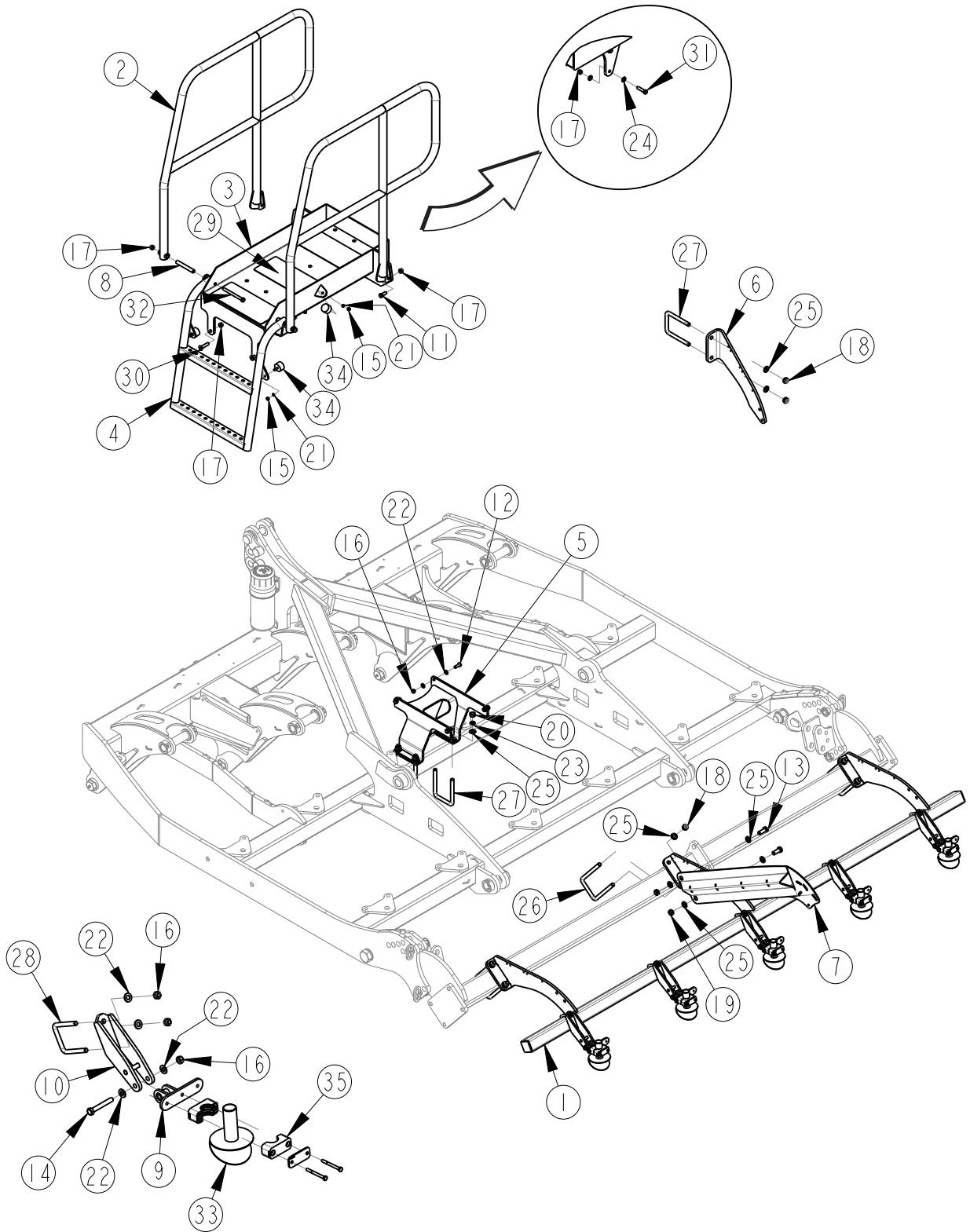


45012

## Aqueel II Roller Assembly

Item	Part No.	Part Description	Comments
1	601-132H	ROLL TUBE - 2900MM	To suit 3.0m machine
	604-055H	ROLL TUBE - 3500MM	To suit 3.5m machine
2	601-147K	AQUEEL 2 WHEEL- 125MM	
3	601-148K	AQUEEL 2 WHEEL- 150MM	
4	601-398D	RING-RETAINING	
5	842-062C	HSFCHCS M12X1.75X50 GR10.9	

# OSR Platform Assembly



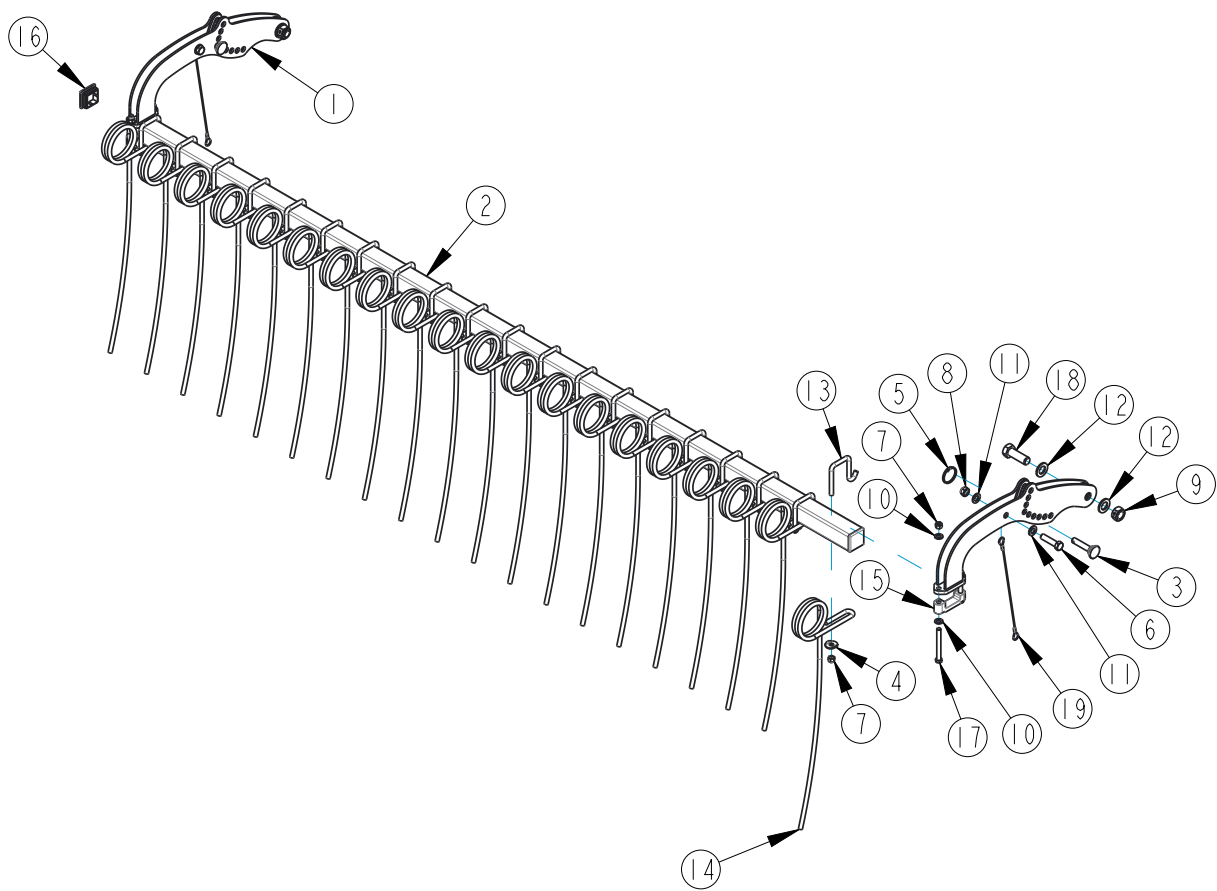
44022



## OSR Platform Assembly

Item	Part No.	Part Description	Comments
1	604-054H	SCRAPER RAIL - 3M	
2	604-106H	HANDRAIL - DTX300-TR	
3	604-124H	PLATFORM - DTX300-AR	
4	604-125H	LADDER - DTX OSR 2012	
5	604-126H	TJ6 MOUNT	
6	604-248D	RADAR MOUNT - AQUEEL 2	
7	604-346D	PLATE 6MM	
8	604-440D	TUBE Ø15.8X1.5 WALL	
9	611-045H	OSR OUTLET MOUNT	
10	611-061H	OSR RAIL MOUNT	
11	802-458C	HHCS M12X1.75X30 GR8.8	
12	802-609C	HHCS M10X1.5X30 GR8.8	
13	802-703C	HHCS M16X2.0X40 GR8.8	
14	802-975C	HHCS M10X1.5X70 GR8.8	
15	803-262C	NUT HEX 8MM STD PITCH	
16	803-280C	NUT HEX NYLOCK M10X1.5 PLT	
17	803-281C	NUT HEX NYLOCK M12X1.75 PLT	
18	803-282C	NUT HEX M16X2.00 NYLON INSERT	
19	803-396C	NUT HEX TOP LOCK M16X2	
20	803-423C	NUT HEX M16X2 PLT	
21	804-157C	WASHER SPRING LOCK M8 PLT	
22	804-162C	WASHER FLAT M10 PLT	
23	804-187C	WASHER SPRING LOCK M16 PLT	
24	804-246C	WASHER FLAT M12 PLT	
25	804-247C	WASHER FLAT M16 PLT	
26	806-236C	U-BOLT M16-2.00 X 101 X 190	
27	806-240C	U-BOLT M16X2 X 101 X 145	
28	806-242C	U-BOLT M10X1.5 X 61 X 83 GR8.8	
29	816-757C	3M SA GRIP STRIP	
30	842-062C	HSFCHCS M12X1.75X50 GR10.9	
31	842-109C	HHCS M12X1.75X50 GR8.8	
32	842-214C	HHCS M12X1.75X130 GR8.8 SPTH	
33	891-334C	DISTRIBUTOR HEAD	
34	891-514C	BUFFER Ø40X28 M8X23	
35	TJ223	STAUFF CLAMP ASSEMBLY	

# Following Harrow Assembly

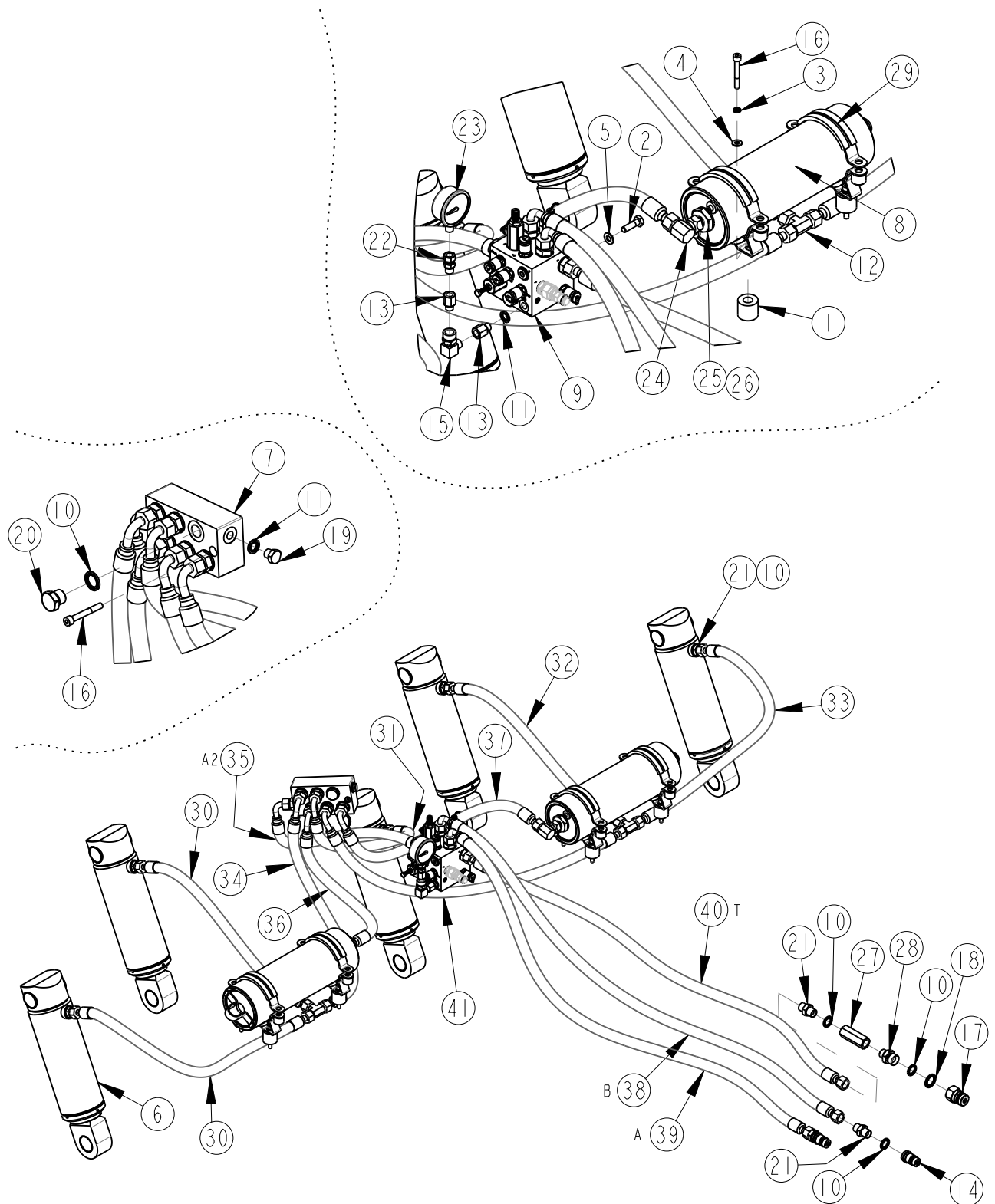


44018

## Following Harrow Assembly

Item	Part No.	Part Description	Comments
1	604-015H	HARROW ARM	
2	604-185D	60X60X5	
3	606-053D	PIN Ø16X73	
4	800-427C	WASHER - WEEDER TINE	
5	800-430C	CIRCLE COTTER 52X2.6	
6	802-891C	HHCS M16X2.0X65 GR8.8	
7	803-281C	NUT HEX NYLOCK M12X1.75 PLT	
8	803-282C	NUT HEX M16X2.00 NYLON INSERT	
9	803-400C	NUT LOCK M24X3	
10	804-246C	WASHER FLAT M12 PLT	
11	804-247C	WASHER FLAT M16 PLT	
12	804-251C	WASHER FLAT M24 PLT	
13	806-232C	U-BOLT M12 - HOOK	
14	807-316C	WEEDER TINE Ø12MM	
15	812-414C	SCRAPER CLAMP PLATE	
16	817-948C	END CAP 60X60 TUBE	
17	842-011C	HHCS M12X1.75X110 GR8.8	
18	842-014C	HHCS M24X3X70 GR8.8	
19	RAS001-01-531C	WIRE ROPE SLING	

### 3.0m Tine Hydraulic Circuit



44021

### 3.0m Tine Hydraulic Circuit

Item	Part No.	Part Description	Comments
1	604-063D	BUSH Ø36XØ16.5X31.5MM	
2	802-628C	HHCS M10X1.5X35 PLT	
3	804-157C	WASHER SPRING LOCK M8 PLT	
4	804-161C	WASHER FLAT M8 PLT	
5	804-162C	WASHER FLAT M10 PLT	
6	810-795C	CYL 95X200X80 DISP	
7	810-852C	7 PORT MANIFOLD BLOCK	
8	810-930C	ACCUMULATOR 2L PISTON 80B	
9	810-931C	MANIFORLD ALUMINIUM 6082T6	
10	841-792C	WASHER 1/2BSPP BONDED	
11	841-794C	WASHER 1/4BSPP BONDED	
12	841-807C	TEE 1/2MBSPP 1/2MBSPP 1/2MBSPP	
13	841-811C	AD 1/4MBSPP 1/4FBSP	
14	841-906C	QUICK RELEASE MALE - 1/2"BSP	
15	841-912C	EL 90 1/4MBSP 1/4FBSP	
16	842-127C	HSHCS M8X1.25X60 GR12.9	
17	851-057C	QUICK RELEASE MALE - 3/4" BSP	
18	851-061C	WASHER 3/4BSPP BONDED	
19	851-080C	PLUG 1/4 M BSPP	
20	851-082C	PLUG 1/2 M BSPP	
21	851-184C	AD 1/2MBSP 1/2MBSP	
22	851-189C	GAUGE ADAPTOR 1/4FBSP 1/4MBSP	
23	851-190C	PRESSURE GAUGE 250BAR	
24	851-197C	CPEL 1/2MBSP 1/2FBSP	
25	851-294C	AD 1MBSP 1/2MBSP	
26	851-295C	WASHER 1BSPP BONDED	
27	851-407C	CHECK VALVE 1/2"BSP - 20 BAR	
28	851-773C	AD 1/2MBSP 3/4MBSP	
29	891-305C	ACCUMULATOR CLAMP	
30	841-851C	HA 1/2"X650 F/F	
31	841-852C	HA 1/2"X620 F/F90	
32	841-853C	HH1/2R2 620MM 1/2FBSP/1/2FBSP	
33	841-854C	HA 1/2"X850 F/F	

### 3.0m Tine Hydraulic Circuit

<b>Item</b>	<b>Part No.</b>	<b>Part Description</b>	<b>Comments</b>
34	841-855C	HH1/2R2 800MM 1/2BSP/1/2/BSP90	
35	841-856C	HA 1/2"X490 F/F90	
36	841-857C	HA 1/2"X590 F/F90	
37	841-858C	HA 1/2"X750 F/F90	
38	841-859C	HA 1/2"X1890 F/F90	
39	841-860C	HA 1/2"X1790 F/F90	
40	841-861C	HA 1/2"X1775 F/F	
41	841-864C	HA 1/2"X850 F/F90	

**This page has been left blank**

# Safety/Maintenance Decal

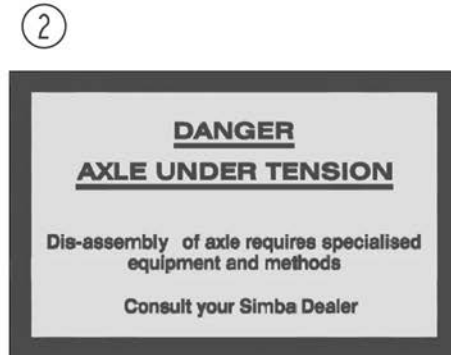


Illustration Number



## Safety/Maintenance Decal

<b>Item</b>	<b>Part No.</b>	<b>Part Description</b>	<b>Comments</b>
1	848-900C	DECAL-DTX PARK POSN.	
2	P12558	DECAL- AXLE TENSION	
3	P15869	DECAL- CHAIN DOWN LIF	
4	P16717	DECAL-GROUP WARNING	
5	858-646C	DECAL-UNION JACK	
6	858-642C	GREASE 200 HOURS	
7	858-638C	DD ROLL	

## Safety/Maintenance Decal Location

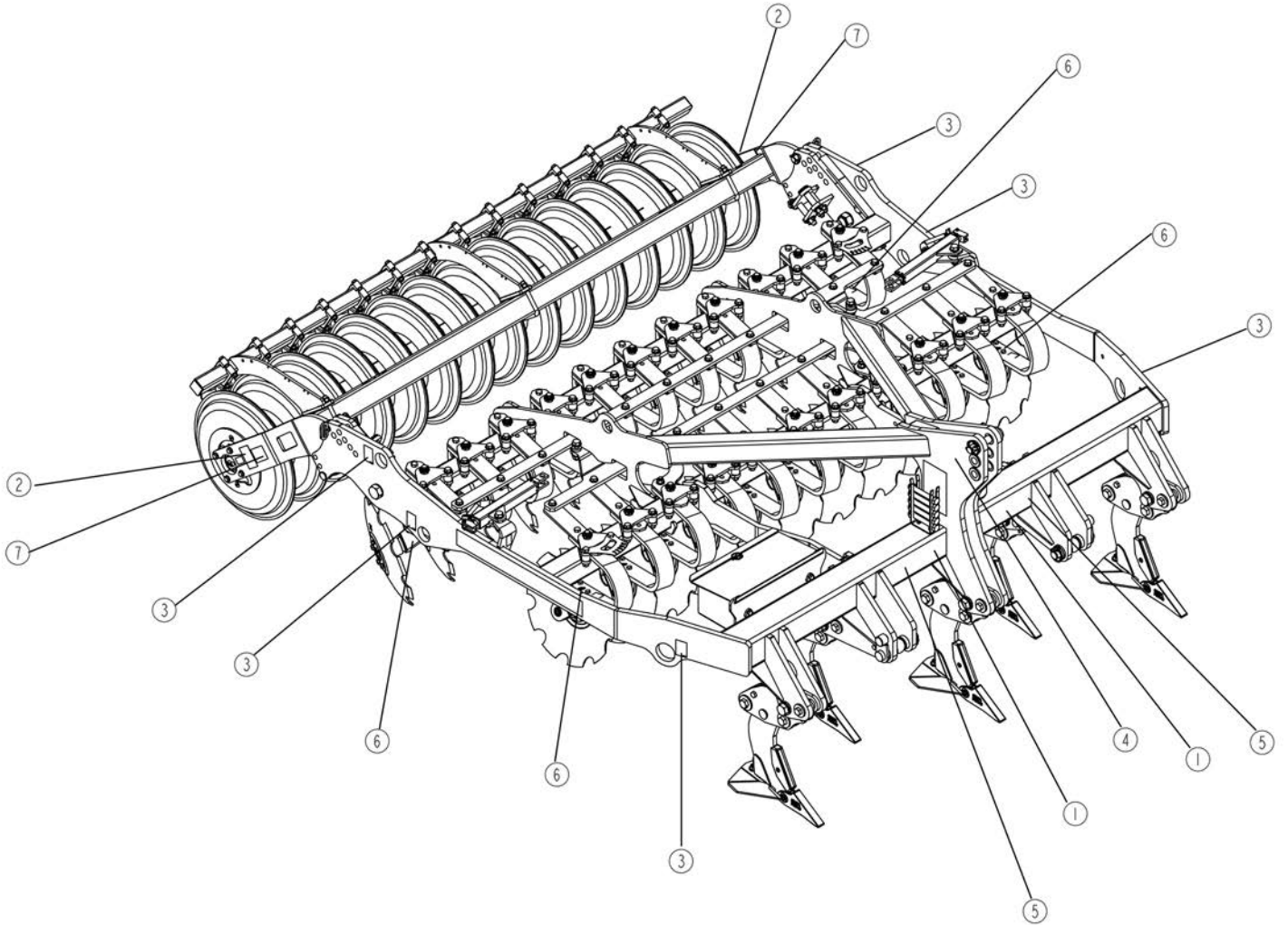


Illustration Number

## Safety/Maintenance Decal Location

<b>Item</b>	<b>Part No.</b>	<b>Part Description</b>	<b>Comments</b>
1	848-900C	DECAL-DTX PARK POSN.	
2	P12558	DECAL- AXLE TENSION	
3	P15869	DECAL- CHAIN DOWN LIF	
4	P16717	DECAL-GROUP WARNING	
5	858-646C	DECAL-UNION JACK	
6	858-642C	GREASE 200 HOURS	
7	858-638C	DD ROLL	



<b>Great Plains UK Ltd.</b>	<b>Tel:</b> +44(0)1529 304654
Woodbridge Road, Sleaford	<b>Fax:</b> +44(0)1529 413468
Lincolnshire, NG34 7EW	<b>E-Mail:</b> <a href="mailto:simba@greatplainsmfg.com">simba@greatplainsmfg.com</a>
United Kingdom	<b>Web:</b> <a href="http://www.greatplainsmfg.co.uk">www.greatplainsmfg.co.uk</a>